

WinMerik® PC Software Application Data Monitoring and Storage

WinMerik is for customers with MERRICK Controllers who want to get more from their feeder or scale system. A Personal Computer (PC) running WinMerik that is connected to a MERRICK Controller can:

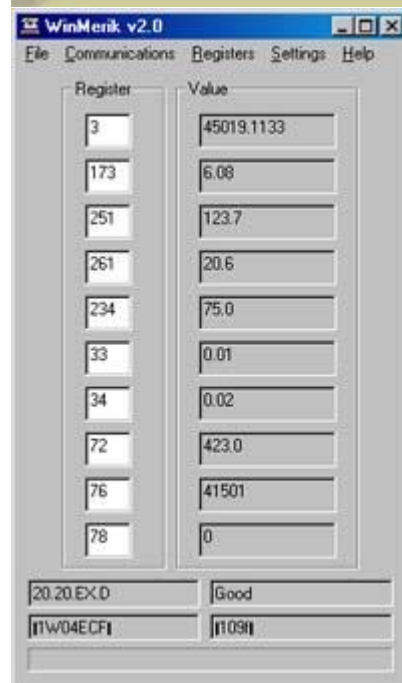
- Monitor up to 10 Process Values in real-time
- Log Real-Time Process Values to the PC's Disk Drive
- Use DDE to transfer process values to other software
- Read and store to disk all parameters in the controller
- Transmit parameters stored on disk to a controller

With WinMerik it is possible to:

- Graph historical data in a spreadsheet program
- Graph live real-time values in a spreadsheet program
- Store calibration and program parameters for future use
- Restore calibration and program parameters to a controller
- Use DDE to send data to Supervisory or PLC Systems
- Use business network to transfer/monitor data in the plant

PC System Requirements:

- Windows 95, 98, NT, XP
- CD ROM Drive



- RS-232 or RS-485 Com Port
- 80386 or higher processor
- 16 Meg RAM
- 2 MB Hard Drive Space